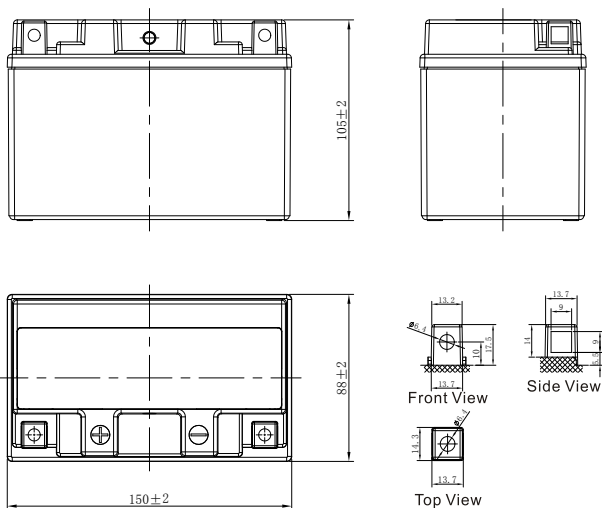


MAINTENANCE-FREE MOTORCYCLE BATTERY

HPG12A-4-1 (12V10Ah)



GENERAL FEATURES

- Longer lifespan
- Lower self-discharge
- Totally Maintenance-free
- Shipped pre-charged and ready to install

*Values are subject to variation of +/- 5% in normal manufacturing processes.

Leoch International Technology Ltd.
www.leoch.com

Leoch Batteries Pte Ltd
www.leoch.sg

Leoch Battery Corporation
www.leochamericas.com

Leoch Europe S.A.
www.leoch.eu

Data above is recommended and the picture is only for battery effect display, Leoch reserve the final right of explanation.
© LEOCH. All rights reserved. Trademarks and logos are the property of LEOCH and its affiliates unless otherwise noted. Subject to revisions without prior notice. E&OE.

CHARACTERISTICS

Item	Specifications	
Nominal Voltage	12V	
Nominal Capacity (10HR)	10Ah	
Cold Cranking Performance Amps@0°F (-18°C)	145A	
Dimension (±2mm)	Length	150mm (5.91inches)
	Width	88mm (3.46inches)
	Container Height	105mm (4.13inches)
	Total Height	105mm (4.13inches)
Battery (with acid)	Approx Weight	3.29kg (7.25lbs)
Terminal type	A	
Battery type	HPG Series	
Voltage Full Charge	Constant-Voltage Charge:	
	Initial charging current	Less than 0.3C ₁₀
	14.40V~15.00V at 25°C (77°F)	
	Charging time	15~18h
Floating Charge Voltage	Constant-Current Charge:	
	Charging current 0.1C ₁₀ , when charging voltage up to 14.40V, continue to charge 4h	
	Initial charging current	Unlimited
	13.50V~13.80V at 25°C (77°F)	
Capacity affected by Temperature	40°C (104°F)	106%
	25°C (77°F)	100%
	0°C (32°F)	86%
	-15°C (5°F)	65%

Discharge Characteristics (25°C, 77°F)

