

EFB START-STOP BATTERY

EFB-D26L(S-95) (12V80Ah)



CHARACTERISTICS

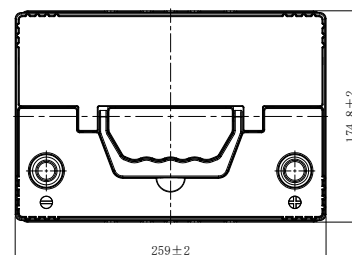
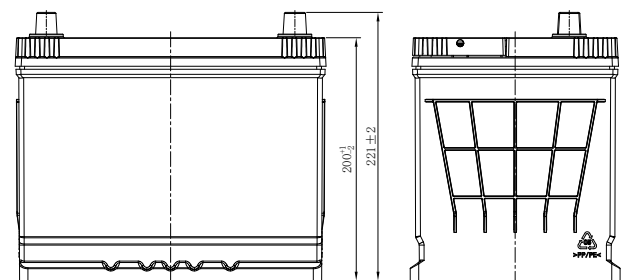
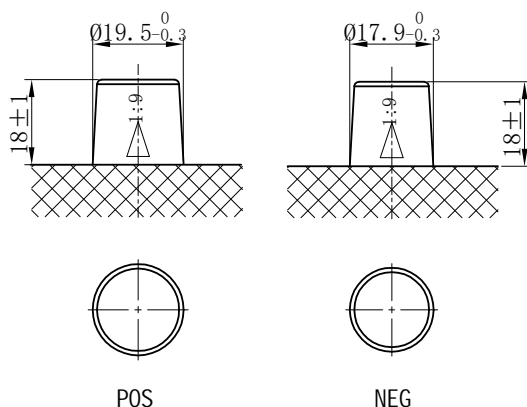
Item	Specifications
Nominal Voltage	12V
Nominal Capacity (20HR)	80Ah
Reserve Capacity	140min
Cold Cranking Amps@0°F (-18°C)	750A
Dimension	Length
	259mm (10.2inches)
	Width
Height	174.8mm (6.88inches)
	221mm (8.70inches)
Approx Weight	21.1kg (46.5lbs)
Terminal	1
Cell layout	0
Hold-Down	B1
Case	Black-PP Material
Cover	Black-PP Material
Handle	TS1

APPLICATIONS

- Car with start-stop system
- EV/HEV
- Engine start

GENERAL FEATURES

- High capacity and high CCA
- 2x Faster Charge Acceptance than conventional starter batteries
- 2x Higher Cycle Life than conventional starter batteries
- Strong alloy grids for rugged durability and improved tolerance in extreme temperature conditions
- OE quality certification



*Values are subject to variation of +/- 5% in normal manufacturing processes.

Leoch International Technology Ltd.
www.leoch.com

Leoch Batteries Pte Ltd
www.leoch.sg

Leoch Battery Corporation
www.leochamericas.com

Leoch Europe S.A.
www.leoch.eu